



don't save lamp, save energy, save our Earth

# Sensor Light Intelligent Auto Dimming

## SENSE

### Description

Inside a simple linear weatherproof housing lie a state of the art high frequency sensor for motion detection and **dimming** control of our high output **LED** lamp.

### Design

Double compartment design that separate the driver, sensor and emergency battery pack from the LED heat source thus ensure optimum performance and prevent premature failure.

### Construction

Housing made by high pressure injection moulding, vandal resistance, high rigidity UV stabilised **GRP** material with high mechanical resistance and anti-corrosion properties.

Diffuser of UV stabilised frosted polycarbonate, special **optical design** that eliminate LED glare.

Reflector of high thermal conductivity die cast aluminium with heat dissipation fins for quick and effective heat transfer.

### Sensor

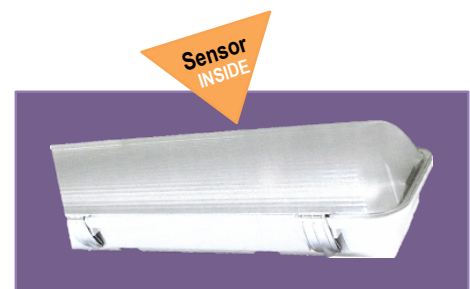
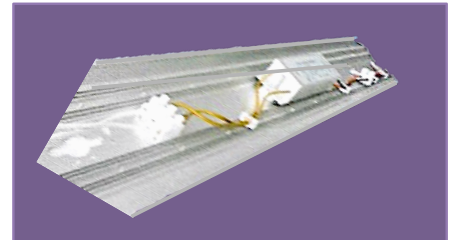
Using latest microwave sensing technology, it can penetrate through door, glass pane and thin wall with high detection capability and even 2 stages of dimming, such as from 100% to 30% to 0%

### How It Works

The sensor continuously scan for motion within it preset detection zone (Ø1m to Ø10m) and upon detection it will turn the lamp to full brightness.

If no further detected motion after a customized hold time, the sensor will dim the LED lamp.

LED		360° ← 1-10m → Detection Zone		5 sec - 10 min Hold Time		0 - 100% Dimming Range	IP 66	CE
-----	--	-------------------------------------	--	-----------------------------	--	---------------------------	-------	----



### Application

It is specifically designed to be used in places with low human traffic but yet need to be lighted up for safety or security requirement, such as :

- Carpark
- Corridor
- Overhead Bridges
- Staircase
- Underpass
- Walkway

MODEL		LT 1109Z	LT 1209Z	LT 1118Z	LT 1218Z
Wattage	Max	1 x 10	2 x 10	1 x 18	2 x 18
	Econ *	3	6	3	6
Luminous Flux (lm)		1150	2300	2070	4140
Dimensions (L x W x H)		662 x 88 x 95	662 x 158 x 100	1272 x 88 x 95	1272 x 158 x 100
Power Factor		> 90%			
CRT Ra		> 80			
LED Lamp Life		50,000 hrs			
CCT K		3000K / 4000K / 6000K			

Optional emergency power pack available upon request

\* Dim mode

Specification subject to change without prior notice