



don't save lamp, save energy, save our Earth

Wall Light

ALUMINIUM

LED

IP 66

Application

Simple and elegant design wall light for both indoor and outdoor.

Especially useful to highlight building façade, pillars and to accentuate the visual effect of height

Construction

The housing is made from die cast aluminium. Front tempered glass with silicon gasket for maximum protection against ingress of water and dust.

Light Source

Energy efficient, long life and maintenance free LED with integrated control gear for fast and easy installation

One degree super narrow beam, dimmable

Lamp Colour :

CCTK : 3000K & 5000K

Lamp Wattage :

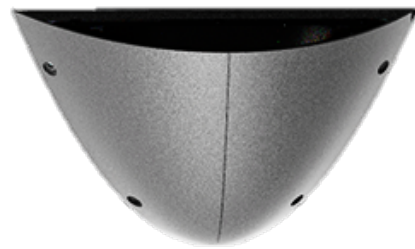
LED 11W, LED 18W & LED 25W

Finishes

Polyester powder coated for resistance against corrosive and saline environments.

Available colour : Matt white, Matt black and Silver grey

NEW



AJS-WL-01
200 x 200 x 100

